

# Aperture, Shutter Speed & ISO

for  
**Kite Aerial  
Photography**

***Nex 5n, Tv mode, 35mm, f4, 1/1250, ISO 500***

Al Edgar  
February 2014

# What You Need for Kite Aerial Photography



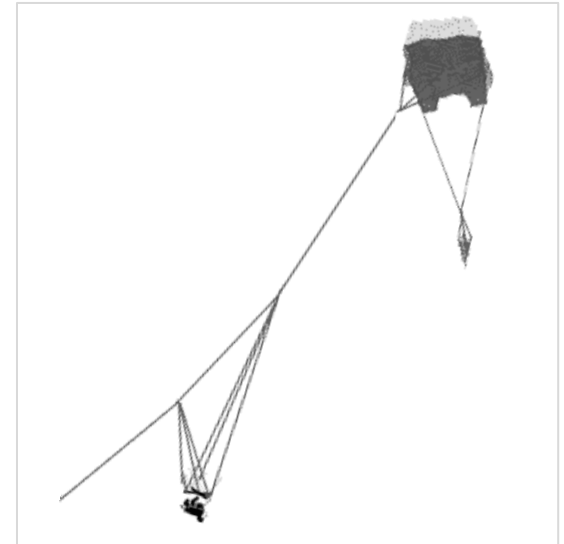
Kite and Reel to lift your camera



Camera and control mechanism to aim and compose your shot

Set your exposure:

- Aperture, Shutter Speed and ISO for the conditions and subject





# Kite Aerial Photography

- Many similarities to Street Photography:
  - Pre-visualize the shot you want
  - Quick reflexes to capture the action when it happens
  - No time to optimise camera settings – just do it!
  - Semi automated operation with progressive adjustments pre-set
- No time to think!
- Many distractions:
  - Video live feed
  - People asking questions
  - Misbehaving kite!
- Set and remember!
- BUT with...  
*...Thousands of dollars at risk...*





Copyright Al Edgar

## ***Yours or Mine?***

Time:	Early morning, full sun
Camera:	NEX 5n (1.5x crop factor)
Lens:	Minolta 45mm f1.7 Aperture set to f4
Mode:	Shutter Priority
Shutter:	1/4000 <sup>th</sup> of a second
ISO:	Automatically adjusts to 100



# Choose Your Lens to Suit Your Photography

- High quality primes with excellent corner resolution
- Shoot wide, crop savagely
- Maximum aperture f1.4 to f2.8 preferred
- Resistance to flare



Copyright Al Edgar



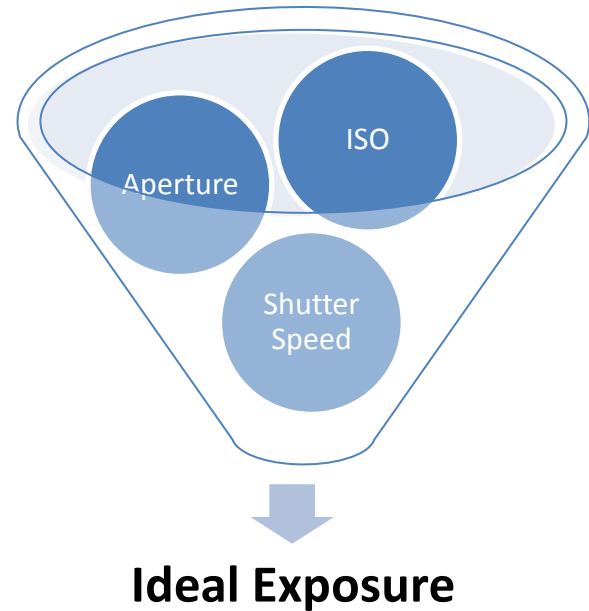
## Other Important Stuff

- Shoot Raw files only
- Increase shutter speed by setting – 0.7 EV
- Sports mode or continuous frames for action
- Candle light mode for dusk
- In camera noise reduction – customised to suit ISO



# Camera Settings

- Manual or pre-set focus
- TV Mode, Shutter Priority preferred
- TAv mode for aperture and Shutter
- Blurry shots not acceptable
- Use manual lens and set aperture
  - Set shutter to suit conditions
  - Set progressive Noise Reduction



Copyright Al Edgar





### ***Power Glide***

Time:	Early morning, full sun
Camera:	NEX 5n
Lens:	Minolta 45mm f1.7 Aperture set to f4
Mode:	Shutter Priority
Shutter:	1/3200 <sup>th</sup> of a second
ISO:	Automatically adjusts to 200





Copyright Al Edgar

## ***After Sunset***

Time:	20 minutes after after sunset
Camera:	NEX 5n
Lens:	Sony 16mm f2.8 set to f3.5
Mode:	Anti motion blur mode (“candle mode”)
Shutter:	1/60 <sup>th</sup> of a second
ISO:	Automatically adjusts to 6400

An aerial photograph of a beach at sunset. The ocean is a deep teal color with white foam from waves breaking onto the shore. The sand is a warm, golden-brown color. In the lower-left corner, a group of people are gathered on the beach, surrounded by several surfboards. The surfboards are in various colors, including green, blue, and white. The people are sitting or lying on the sand, and some are holding surfboards. The overall scene is peaceful and captures the end of a day of surfing.

Copyright Al Edgar

Time:	On sunset
Camera:	Ricoh GR
Lens:	Ricoh 28mm f2.8
Mode:	TAv mode
Shutter:	1/2000 <sup>th</sup> second
ISO:	Auto 1600

*After the Day is Done*





Copyright Al Edgar

## ***Kid's Stuff***

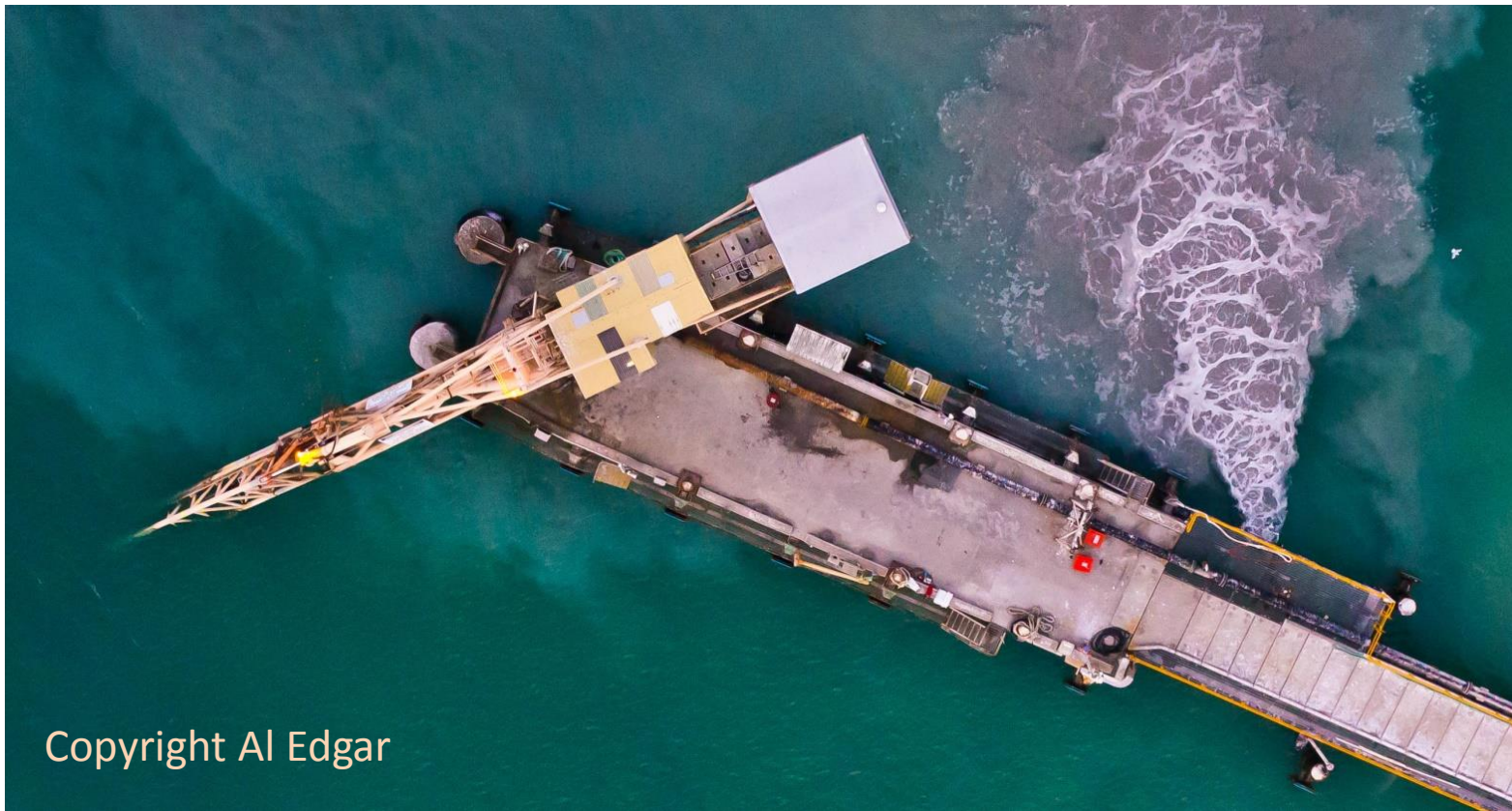
Time:	Mid morning
Camera:	NEX 5n
Lens:	Minolta 45mm f1.7 Aperture set to f2
Mode:	Shutter Priority
Shutter:	1/4000 <sup>th</sup> of a second
ISO:	Automatically adjusts to 160



## ***Making Tracks***

Time: Early morning, full sun  
Camera: Ricoh GR  
Lens: Ricoh 28mm f2.8 set to f4.5  
Mode: TAv mode  
Shutter: 1/3200<sup>th</sup> of a second  
ISO: Automatically adjusts to 140

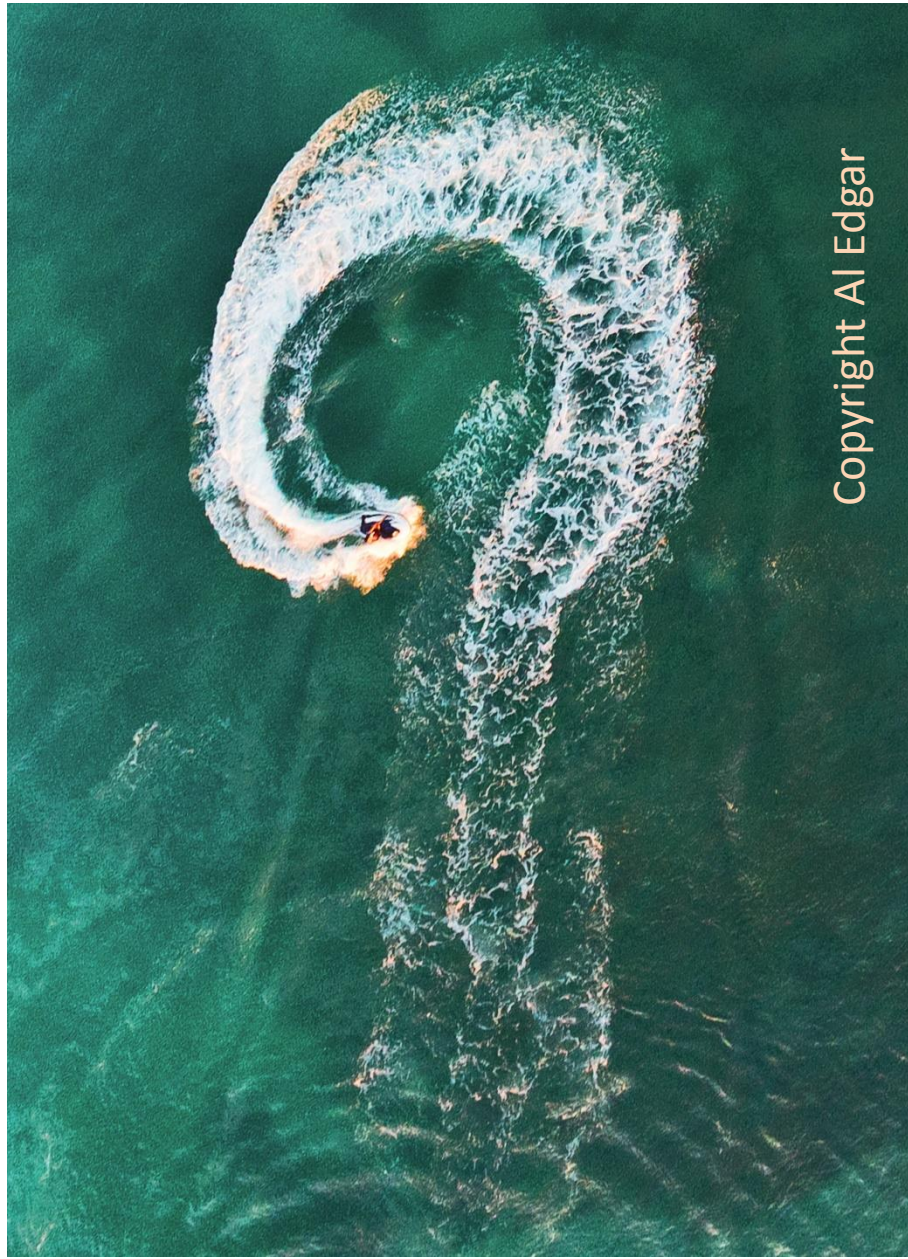




Copyright Al Edgar

*Bird's Eye View*

Time: Just after sunset, blue sky  
Camera: NEX 5n  
Lens: Voigtlander 21mm, f4  
Mode: Shutter Priority  
Shutter: 1/640<sup>th</sup> of a second  
ISO: Automatic adjusts to 2000



Copyright Al Edgar

***Huh?***